

## Like clockwork... first Milk into Wanganui on 1st August 2009!

Congratulations to **Steve Koekemoer**, National Operations Manager, **Mark Hillman**, Project Manager (pictured left below) and **Stewart Ray**, Plant Manager, (pictured right below), for leading the construction crews and Open Country operators to this historical day for Open Country. Congratulations also must go to Nick Walker and Pete Garrett, leading the Tanker Driver team at **Dairy Fresh Ltd**.

An official open day is being planned for February 2010 at the factory and until then both manufacturing teams and Suppliers alike, in our 'Partnership by Choice' will be working hard to produce quality milk and quality product for export. Below are some photos of the first tanker, 1 of 4 unloaded on 31 July 2009 and the first Whole Milk Powder which was manufactured on Saturday 1 August as planned...like clockwork.

**Stu Ray, Plant Manager, was there as the first tanker turned up and unloaded.  
One word to describe it Stu? 'AWESOME!'**

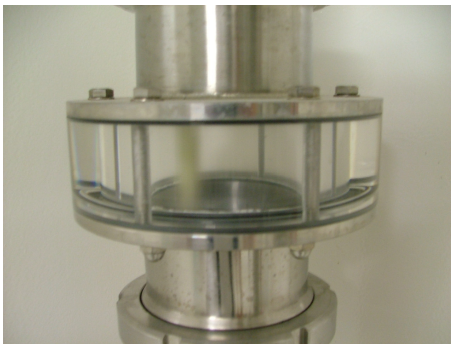
**Thanks to all our Wanganui Suppliers for making this possible – from all of us at Open Country**



**Left: 31 July 09  
First Tanker arriving and  
unloading on site at  
Wanganui !**



**Right: 31 July 09  
Open Country operators  
at first Tanker unloading -  
thanks for all your efforts!**



**Left: 1 Aug 09  
Powder from sifter,  
heading towards  
hopper.**



**Right: 1 Aug 09  
Mark Hillman (left) &  
Stu Ray (right), at  
production of the first  
bag of WMP!**



**Left: 1 Aug 09  
1st Bag being filled!**

**Right: 1 Aug 09  
1st Pellet being  
fork-lifted into storage,  
ready for shipping.**

